



VON RUDEN

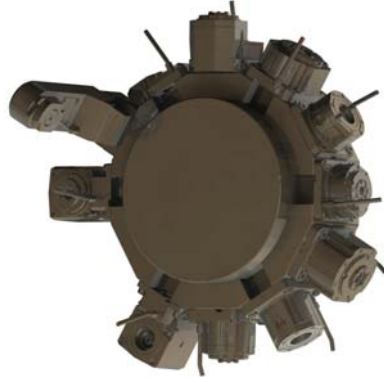
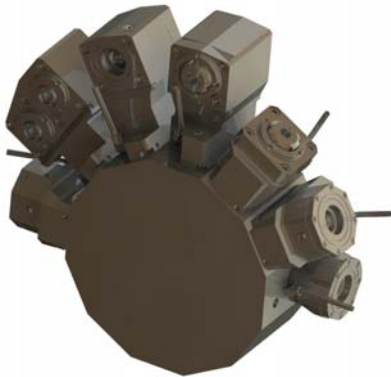
Driven Tools with Ultimate Performance

PROVEN PERFORMANCE

87% of our tools since 2001 are still in the field, without a single repair.

94% of test tool programs result in customer purchases.

100% satisfaction guarantee. Flexibility and Partnership is our only way.



HYDRAULIC & POWER TRANSMISSION

Von Ruden Driven Tools are designed for years of life. As the only manufacturer who combines over 60 years of power transmission, gearbox and bearing expertise with over 30 years of hydraulic and seal expertise, it is no wonder why these tools will continue to run long after the competition. Rest assured, these tools are designed, built and tested to the highest industry standards for the ultimate performance in milling capability.

THROUGH TOOL COOLANT PRESSURE

Von Ruden Driven Tools are designed for years of life. Eventually, a repair will be required including the failure of the internal high pressure seal mechanism. All tools have PRESSURE RELIEFS and DRAINS for when such a failure presents itself. This standard design feature moves the coolant out of the tool and above the turret mounting area thus reducing any potential damage to the turret.

DMG MORI
HAAS
MAZAK
OKUMA

DESIGN, MANUFACTURED AND SUPPORTED IN USA

Von Ruden Driven Tools are designed for years of life. 48 HOUR service and repair to keep your machines running as efficiently as possible. Specials that are supplied within your project time. Kennametal Quick Change or Rego-Fix ER collet systems to meet your application needs. Sales staff that visits you when you need assistance. Von Ruden is a proven supplier for over 60 years. As a customer of these products too, we understand your needs are the same as ours. Reliability! Performance! Support!

VON RUDEN MANUFACTURING, INC.

1008 First Street NE, PO Box 699
Buffalo, MN 55313 USA
Tel: (763) 682-3122 • Fax (763) 682-3954
www.vonruden.com.com
sales@vonruden.com

Driven Tools

Driven Components

Driven to Succeed



VON RUDEN

Driven Tools with Ultimate Performance

Why do over 94% of our test programs result in customer purchases....?



MADE IN USA. Designed, manufactured and supported in the USA. ISO 9001:2008 Certified.



Your only supplier with over 60 years of gear and bearing expertise combined with over 30 years of hydraulic expertise.



All tools are designed to each specific machine as to not limit your equipment's capabilities.



Quality high precision spindle bearings (ABEC 7 / P4 minimum) are used for performance, rigidity and durability for smooth operation and long life giving the assurance of solid performance.



Maximum use of each machine's turret cone for larger diameter duplex bearings set around the clamping system without interference to neighboring tools.



Highest quality seals and o-rings for protection against external contamination. Long-life premium grease for optimum lubrication environment.



Recessed spindle configurations reduces the length of moment arm for longer bearing life while maximizing tool lengths.



Bodies are made of high quality steels with a one piece base hardened for maximum rigidity and wear resistance. Black oxide coated for a professional finish.



Internal and External combination coolant options. High pressure internal coolant options up to 1,500 PSI.



Hardened and honed right-angle spiral bevel and spur cut gears provide for long life, high strength and quiet operation.



Industry proven ER Tooling System for reliable and controlled machining. Wrenches Included!



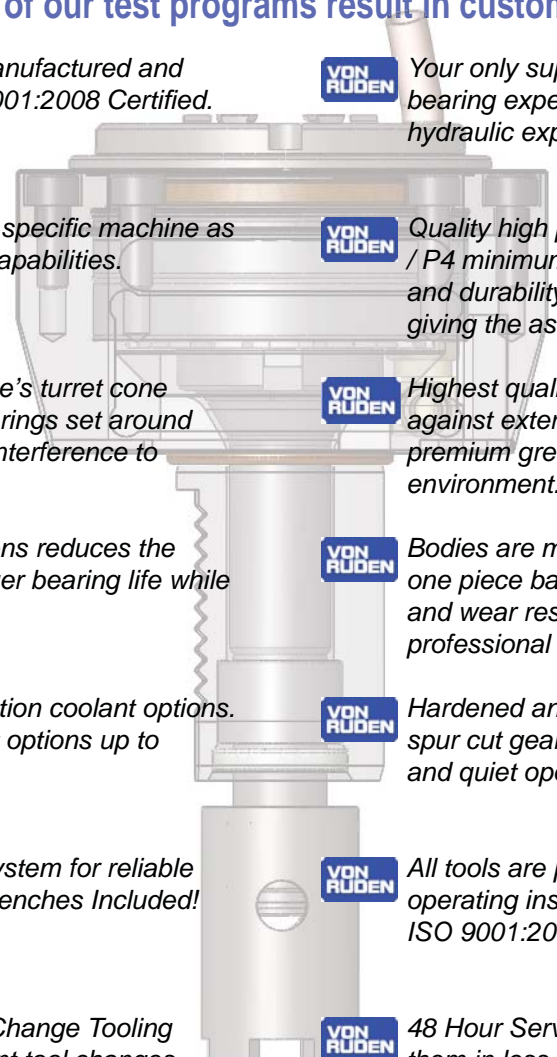
All tools are packaged with specification sheets, operating instructions and audit-test reports. ISO 9001:2008 Certified.



Kennameta® Modular Quick-Change Tooling System for reliable and efficient tool changes.



48 Hour Service on repairs! We have even done them in less than one hour. We understand your urgency as we are a customer too!



Driven Tools

Driven Components

Driven to Succeed