

TOOL PRODUCTS DRIVEN TOOL HOLDERS

WHY CHOOSE VRM

- MADE IN USA. Designed, manufactured, and serviced in Minnesota.
- All tools are designed to each specific machine as to not limit your equipment's capabilities.
- Maximum use of each machine's turret cone for larger diameter duplex bearings set around the clamping system without interference to neighboring tools.
- Recessed spindle configurations reduces the length of moment arm for longer bearing life while maximizing tool lengths.
- Quality high precision spindle bearings (ABEC 7/P4 minimum) are used for performance, rigidity, and durability for smooth operation and long life giving the assurance of solid performance.
- All tools are packaged with specification sheets, operating instructions and audit-test reports.

OPTIONS

- REGO-FIX collet nuts with supplied wrenches in ER-20 / ER-25 / ER-32 / ER-40
- Ratios:
 - 1:1 / 1:2 / 2:1
- 500 PSI and 1500 PSI ICL Coolant Thru Options
- Spindle Angles:
 - Right-Angle / Straight / Straight Offset
- Multiple spindle, fixed angles, and specials.
- All standard tools rated for machine speeds and torques.

REPAIR TO NEW

*All Von Ruden driven tool holders are designed, manufactured, and repaired in **Buffalo, Minnesota, USA.***

DMG MORI

NL-NLX Series
NT-NTX Series
NZ-NZX Series

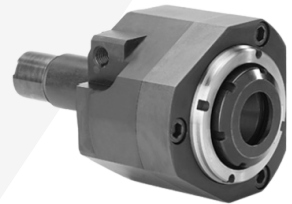


DN SOLUTIONS

BMT 45 Series
BMT 55 Series
BMT 65 Series

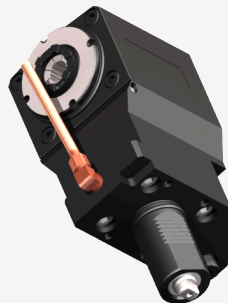


DS Series
SB Series
SL Series
ST Series



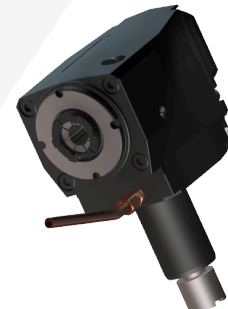
Mazak

HQR Series
MPX Series
QTN Series



LOKUMA

L Series
LB Series
LB EX Series
LU Series
MULTUS Series



Von Ruden Manufacturing, Inc.



2026-04

FLUID POWER
HYDRAULIC MOTORS

MECHANICAL
BEVEL GEARBOXES

TOOL PRODUCTS
DRIVEN TOOL HOLDERS

A family-owned, 100% American-made company with 80 years of experience designing, manufacturing, repairing, and distributing high-performance components. Our products include live and static tooling for machine tools, as well as hydraulic motors, brakes, load adaptors, and bevel gearboxes for mobile and industrial markets.

QUALITY THAT DRIVES – SINCE 1946

Founded in southern Minnesota, Von Ruden began as a tractor saw manufacturer and quickly grew into a leader in motion and power transmission. Today, we manufacture premium hydraulic motors, gearboxes, brakes, tooling, and precision accessories, all designed to meet diverse performance, pricing, and delivery needs. For 80 years, our name has stood for quality, reliability, and innovation.



Von Ruden was founded in 1946 in a small shed in Claremount, Minnesota.



Pictured Left to Right: Marketing Bennett Anderson, CEO Al Anderson, Administration Linda Anderson, and President Brandon Anderson.

RETURN TO FAMILY DRIVEN – SINCE 1989

In 1989, Von Ruden returned to family ownership when Al Anderson acquired the Power Components division from WSI. Relocating to Buffalo, MN, we focused on innovation, investing in cutting-edge technology. When market options didn't meet our standards, we engineered our own, launching into the driven tooling market in 1999. What began as an internal solution is now trusted by shops worldwide.

ENGINEERING THE FUTURE

The future of Von Ruden is built on the same core values that shaped our legacy: quality, innovation, and customer-focused solutions.

From factory floors to field applications, you'll find Von Ruden products making a difference.



All Von Ruden products are 100% manufactured and repaired in Buffalo, Minnesota