

# PLANETARY GEARBOXES



2026-01

## Fluid Power

### MODEL 200B



- Torques to 25,000 lb-inches.
- Five gear ratios. Up to 10:1.
- Maximum output speed 350 R.P.M.
- Bi-directional rotation.
- 95-98% mechanical efficiency.
- Sealed output bearing requires no grease.
- Choice of output shafts

Gear Ratio		Input Torque (LB-IN)		Output Torque (LB-IN)		Maximum Continuous Horsepower (Thermal)
Nominal	Actual	Continuous	Intermittent*	Continuous	Intermittent*	
10:1	9.94:1	1510	2515	15000	25000	17
8:1	8.06:1	1860	3100	15000	25000	17
7:1	7.07:1	2040	3400	14425	24040	17
6:1	5.85:1	2225	3710	13020	21700	17
5:1	5.2:1	2350	3915	12220	20360	17

\*Intermittent conditions are less than 10% of every minute. Intermittent torque and intermittent speed must not occur simultaneously.

### MAX OUTPUT SHAFT LOAD CAPACITIES

Load (LBS)	R.P.M.				
	25	50	100	200	300
Radial	6490	5275	4285	3480	3080
Thrust	6660	5415	4400	3570	3160

Radial capacities shown are with load located 1.5 inches from mounting face of gear box. Maximum radial and thrust loads should not occur simultaneously.

### MAX OUTPUT SHAFT LOAD CAPACITIES

- Ring gear- Case hardened alloy steel
- All other gears and pinion shafts - Case hardened alloy steel
- Housing - Ductile iron
- Output shaft - High tensile ductile iron
- Output bearings-Sealed double row ball bearing

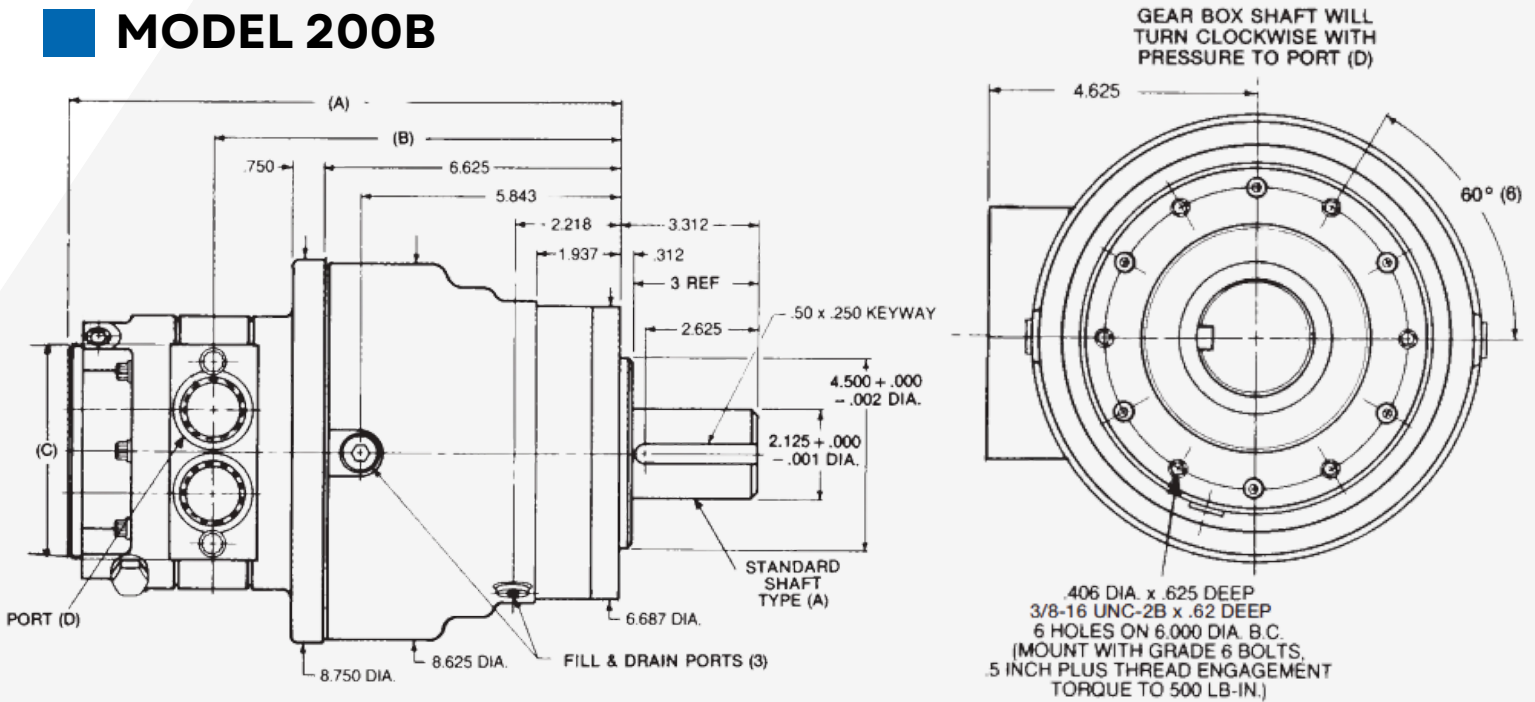
# AXIAL VANE / PLANETARY



Fluid Power

2026-01

## MODEL 200B



Model	A	B	C	Weight
10	11.250	8.687	4.531	74 lbs.
10A/25	11.687	8.687	6.312	90 lbs.
35	12.062	8.875	6.312	91 lbs.
50	12.625	9.187	6.312	97 lbs.
70	13.375	9.562	6.312	103 lbs.

## TYPICAL PERFORMANCE SPECIFICATIONS

Model	Approx Ratio	Theoretical Displacement (CU. IN.)	Model	Approx Ratio	Theoretical Displacement (CU. IN.)	Model	Approx Ratio	Theoretical Displacement (CU. IN.)
10/10A	5:1	5	35	5:1	17.5	70	5:1	35
10/10A	6:1	6	35	6:1	21	70	6:1	42
10/10A	7:1	7	35	7:1	24.5	70	7:1	49
10/10A	8:1	8	35	8:1	28	70	8:1	56
10/10A	10:1	10	35	10:1	35	70	10:1	70
25	5:1	12.5	50	5:1	25			
25	6:1	15	50	6:1	30			
25	7:1	17.5	50	7:1	35			
25	8:1	20	50	8:1	40			
25	10:1	25	50	10:1	50			

THEORETICAL DISPLACEMENT = MOTOR DISPLACEMENT x GEAR BOX RATIO

# PLANETARY OPTIONS

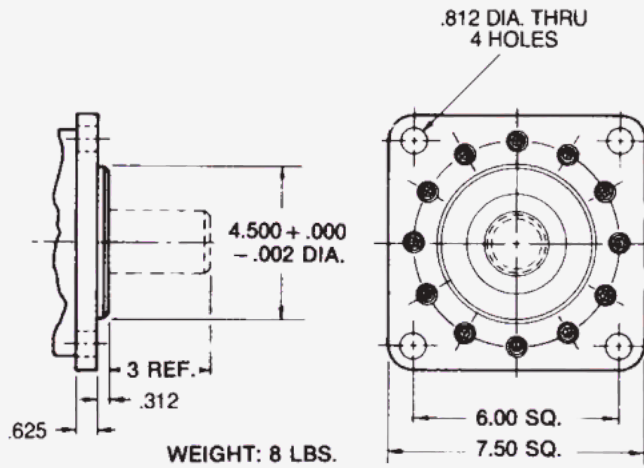


Fluid Power

2026-01

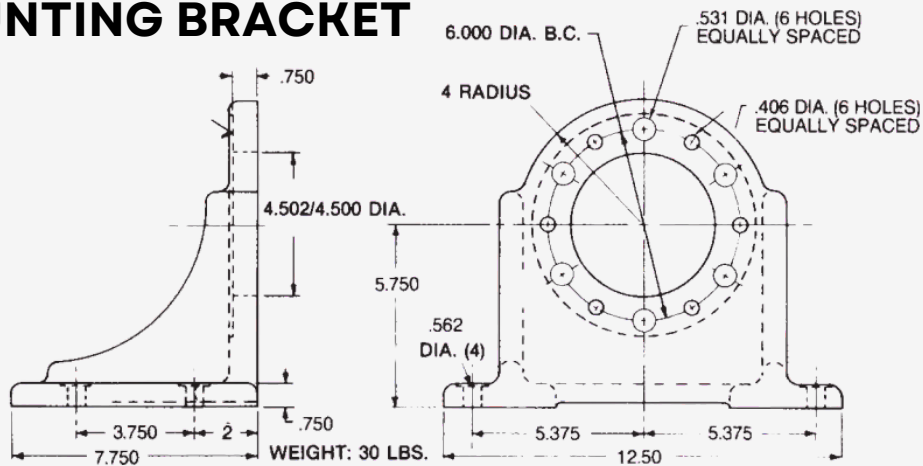
## 4-BOLT FLANGE

PART # 62347 (-14 OPTION)

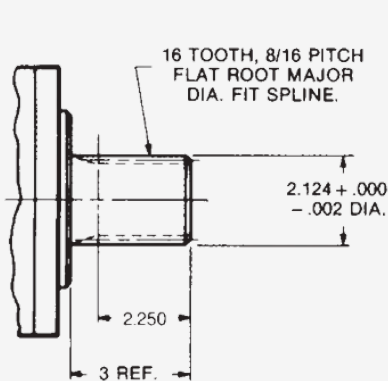


## FOOT MOUNTING BRACKET

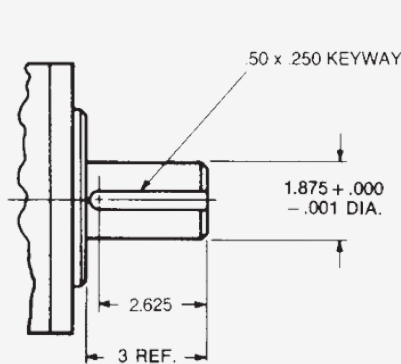
PART # 61077



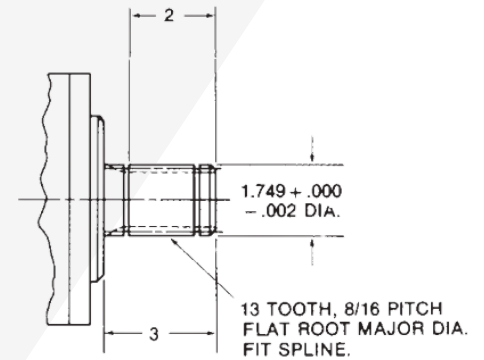
## OUTPUT SHAFTS



OPTION B



OPTION C



OPTION D