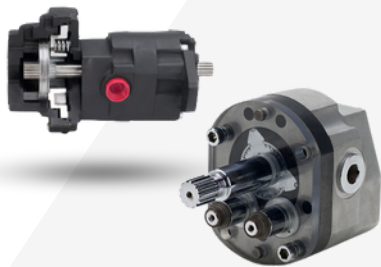


FLUID POWER HYDRAULIC MOTORS

ROL-SEAL® HYDRAULIC MOTORS



Unique rolling abutment design offers smooth low speed, high torque with a proven measurable difference. Compare with all others – gerotor, piston, and gear.

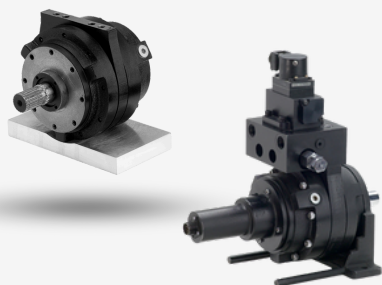
Specifications: (32 to 163cc)

- Seven displacements, 2 to 10 in³ /rev.
- SAE A, B and C flanges and shafts.

Benefits:

- Higher starting torque (92%)
- 10 - 3500 RPM
- Up to 61 gpm, 3750 psi, 4777 lb-in
- Increased vehicle gradeability.
- Less torque “ripple” and “droop.”
- More useable speed and long service life
- Double-ended shaft capability.

AXIAL VANE HYDRAULIC MOTORS



Ultimate hydraulic design for smooth, precise, repeatable positioning applications such as robotics.

Specifications: (16 to 115cc)

- Five displacements, 1 to 7 in³ /rev.
- Options include tach generator, dual relief valves and rear shaft extension.

Benefits:

- High Starting Torque (97%)
- 10 - 3000 RPM
- Up to 46 gpm, 3000 psi, 2229 lb-in
- Accurate, repeatable positioning.
- Rigid for accuracy
- Smooth, balanced speed control
- Fewer wearing parts, exceptional life.

OVERHUNG LOAD ADAPTORS



“Bearing Blocks” Increase hydraulic motor shaft load capacity and motor life.

Specifications:

- 5/8"- 1-3/4" Shaft Diameters
- Ball or tapered bearings
- Grease, oil, or feed lubrication
- 7 Model Series (MINI, SAE A - C)
- 2-Bolt / 4-Bolt mounted frames
- Keyed and splines shaft options

Benefits:

- Increase hydraulic motor life and radial/thrust loads.
- Easily remove or install hydraulic motors.
- Can be used to protect from motor shaft seal leak contamination.

INTEGRAL ACCESSORIES



- Planetary Gearboxes
- Rear Mounted Tach Packages
- Rear Mounted Integral Brake
- Rear Mounted Shaft Extensions
- Radial Load Adaptor
- Dual Relief Valve Options
- Manifold Mounting

All Von Ruden products are 100% manufactured and repaired in Buffalo, Minnesota